

# WORKSHARE PROFESSIONAL 9

## Release Notes



## Table of Contents

What is Workshare Professional .....	4
What's New in Workshare Professional 9.....	5
Office 64-bit support .....	5
Install .....	5
PowerPoint comparison .....	6
UI modernization .....	6
Compare UI modernization .....	7
Apply changes in Compare .....	7
Category view .....	8
Comparison of comments .....	8
Track change output .....	9
Comparing from NetDocuments.....	10
Emailing changes only .....	10
Compare footnote changes.....	10
Saving and sharing redlines to Workshare online .....	11
Interactive Protect customization .....	12
Interactive Protect – automatic apply .....	13
Interactive Protect – PDF individual attachments.....	13
Protect – sending large files.....	14
Protect – manage permissions.....	14
Protect - links shortcut .....	15
Protect – additional Exclude Metadata parameters .....	15
Save/share to Workshare online from Microsoft Office.....	16
Workshare desktop app .....	16
Workshare online inside Office .....	17
NetDocuments integration .....	18
Click-to-run certification .....	18
Licensing change.....	18

Options removed .....	19
System Requirements.....	20
Certified environments for Workshare 9 (32-bit version) .....	20
Certified environments for Workshare 9 (64-bit version) .....	22
Important Information .....	24
Important installation information .....	24
Change Requests Fixed.....	24
Known Issues .....	47
Contact Info .....	51

## What is Workshare Professional

Workshare Professional reimagines multi-party review and collaboration and ensures the safe and accurate exchange of information, enabling the collaborative evolution of high value business documents.

Workshare Professional is a desktop application that automates managing changes to business documents, protects against unauthorized content disclosure and delivers the world's most secure PDF creation, all in one integrated solution.

Key features of Workshare Professional include:

- Comparison of Word, PowerPoint and PDF files, including image-based PDF files
- Ability to accept/reject in a comparison and then create new documents
- Advanced comparison features for Word and PDF files including one-to-many comparisons, version comparisons, and access from within Word and PowerPoint files
- Change notifications in Outlook to alert users to changes in received attachments
- Conversion from PDF to DOC format for local files and from within the DMS/CRM
- Advanced, interactive metadata cleaning/PDF creation/secure file transfer for attachments in Outlook
- Comprehensive content risk protection enabling the discovery and removal of hidden sensitive data as well as visible sensitive data
- Options to save and share Office documents to Workshare online
- Access and visibility into online collaborative workspaces directly from Office
- Secure file sharing from all devices and browsers with metadata removal and end-to-end encryption
- Centralized policy design and enforcement administrator tools
- ECM/DMS and OCR integration with desktop comparison features
- Centralized user account management and control
- Complete access to Workshare online functionality to share and collaborate on documents, including setting folder access and permissions, positional commenting and reviewer communications with presence indicators
- Desktop sync app to synchronize your online content to your local desktop

**Note:** Workshare Professional can be installed without Microsoft Office integration. In this case, the comparison functionality is only available from the Workshare Compare application and the metadata removal functionality is only available when sending emails.

## What's New in Workshare Professional 9

Workshare Professional 9 includes the following new features:

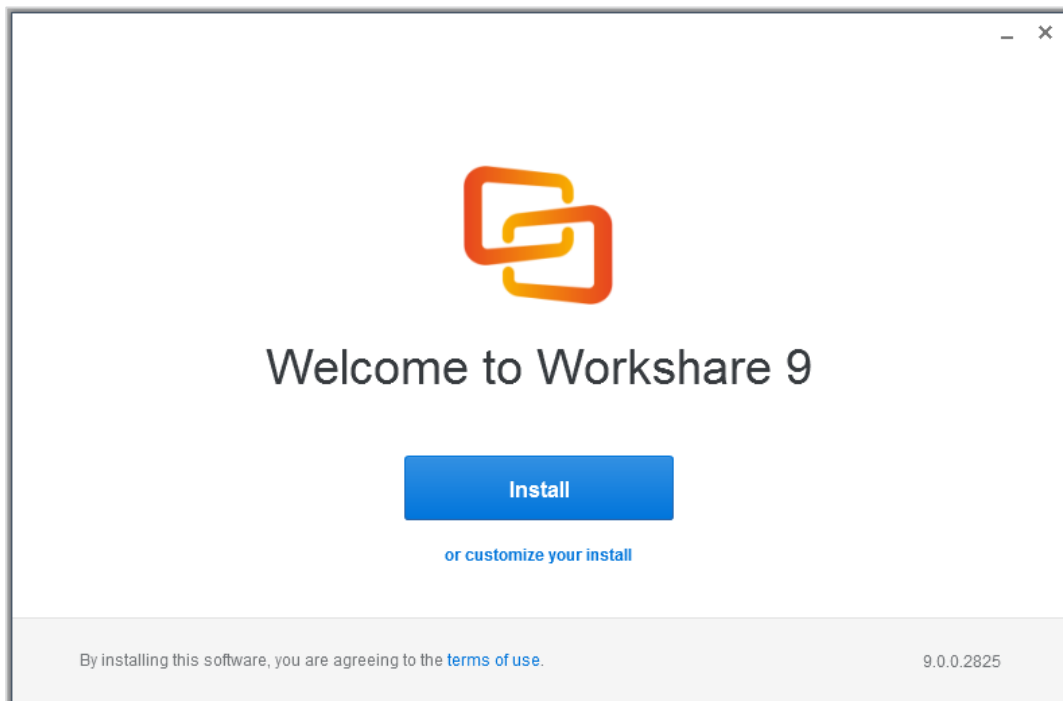
### Office 64-bit support

This release includes a full 64-bit version of Workshare 9. This is a 64-bit application that includes the full feature set of Workshare Professional/Compare/Protect/Connect. Previously, we had a standalone version of Workshare Compare that worked in a 64-bit Office environment. It had a limited feature set. Full system requirements are provided on page 22.

### Install

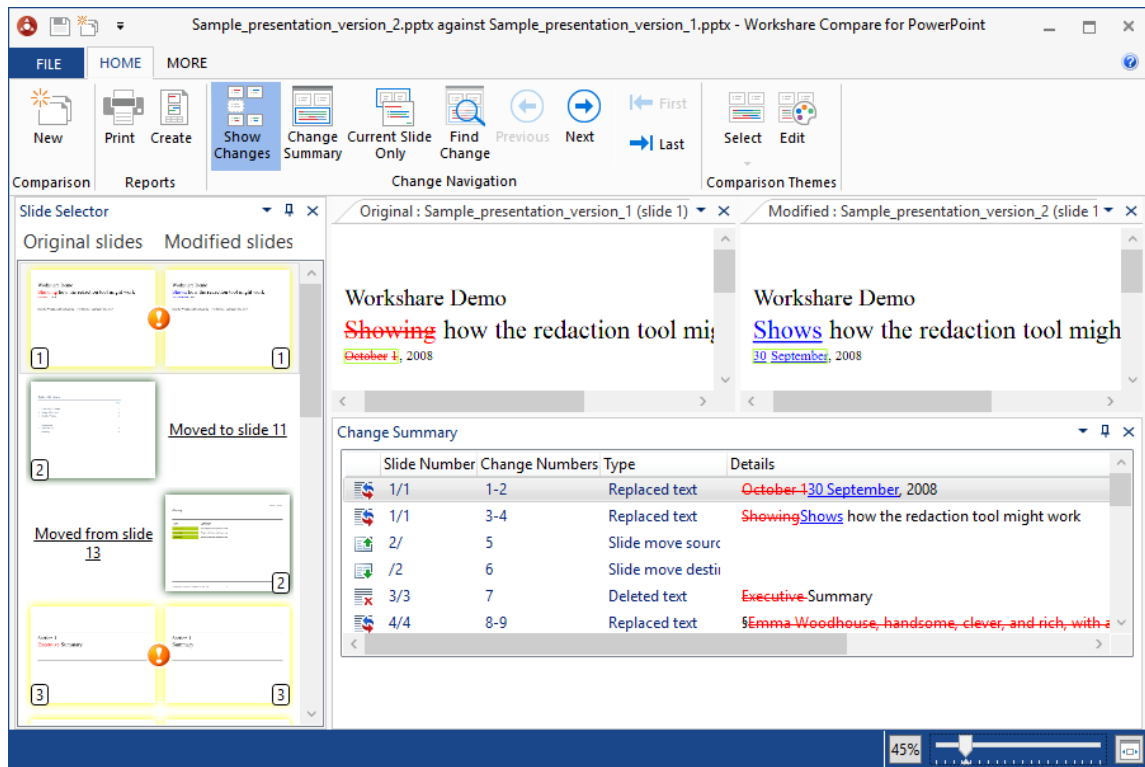
Workshare Professional 9 installs more smoothly with less user interaction required and installs fewer add-ins. For example, in Outlook, there is only one add-in and in Word, there are only two add-ins.

There is also rebranding and new messaging on the installation screens.



## PowerPoint comparison

You can now compare two PowerPoint presentations and review the differences between them. You can see whether entire slides have been moved or deleted as well as what changes have been made to text and objects within each slide. PowerPoint Compare is available from the desktop, from within an open presentation and by right-clicking a closed presentation both locally and in your DMS.

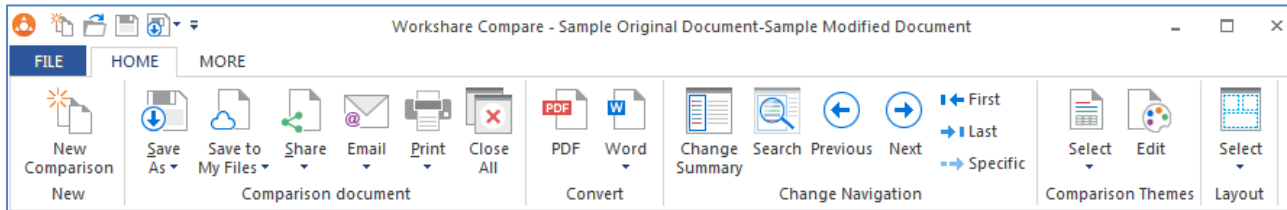


## UI modernization

The Workshare Compare for PowerPoint user interface has been modernized to make comparing documents an easier and more satisfying experience. The ribbon has changed – the icons are more relevant and reflective of their function and the options have been rearranged so that what is most wanted and used is easier to get.

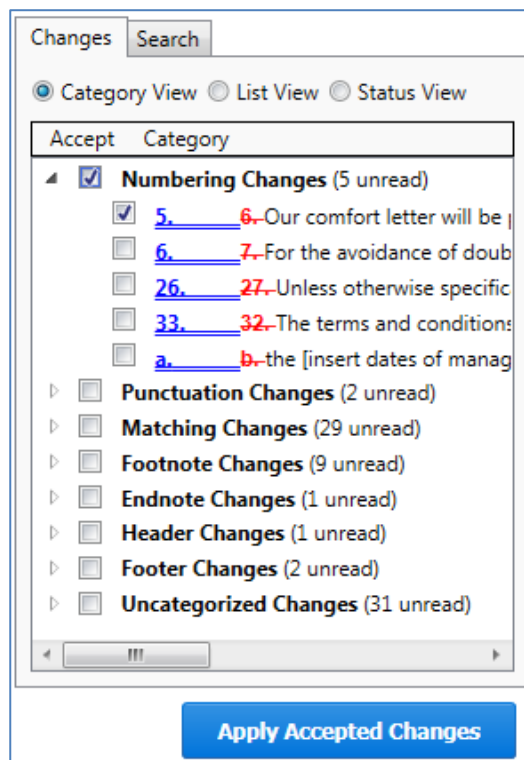
## Compare UI modernization

The Workshare Compare 9 user interface has been modernized to make comparing documents an easier and more satisfying experience. The ribbon has changed – the icons are more relevant and reflective of their function and the options have been rearranged options so that what is most wanted and used is easier to get.



## Apply changes in Compare

Compare 9 includes the ability to accept and reject changes and create a new document. This brand new functionality places Compare at the center of the review and comparison document lifecycle. You can easily understand the changes made to a document and you can focus on the changes that you care about using categories, and now you can create a new version of the document that includes all the changes you accepted and excludes all the changes you rejected.



You can accept and reject from all views in the Change Summary and then save into a new document or save the comparison (redline, original and modified) with your accept/reject selections as a Workshare Deltafile (WDF).

## Category view

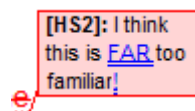
Grouping changes into categories in Compare saves time when reviewing redlines so you can focus on important changes. Categories are not new but the ability to accept/reject an entire category of changes in one go is new and this introduces a fast and efficient review process.

When redlines are extremely long, there can be so many changes that it takes too much time to review them. Some of these changes you may not care about - a lawyer may not be interested in a font change (although a documentation manager would); some of these changes you definitely want to accept without any need for review. For example, the **Spelling Corrections** category includes spelling correction changes and you may be happy to bulk accept such changes. The **Word Variations** category includes changes where a word has been varied grammatically but not in meaning, such as fix changed to fixed or fixing, and again you may be happy to accept all of this type of change. The **Matching Changes** category includes changes that are the same like a name change from Client 1 to Client 2 in 200 different places and you can quickly accept them all in one go.

## Comparison of comments

We have always compared comments – as long as the **Display comments in Redline** parameter is selected in the Rendering set (**Comparison Options**). This parameter is off in the default rendering sets.

We have improved the way we show changes in comments. Prior to Update 5, comments were pulled into the body of the document and compared there. Now, they are maintained as comments so it is very easy to see that changes have been made to a comment.



Also, there is a new category in Category View called **Comment Changes** that groups all changes to comments together.

You cannot apply changes to comments. A user can still select the checkbox next to a comment change but when clicking **Apply Accepted Changes**, the changes will not actually be accepted.

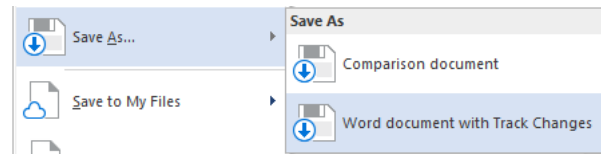
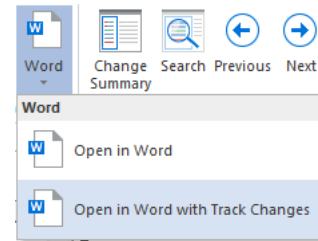


## Track change output

The Compare 9 ability to convert redlines to documents with track changes is greatly enhanced. Compare no longer uses Word for the conversion and redlines no longer include Workshare styles so the whole process is now faster and more accurate. Using this process, the changes are converted to track changes and you can implement the changes using Word's track changes functionality.

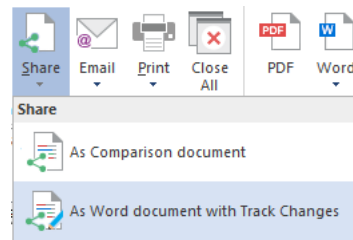
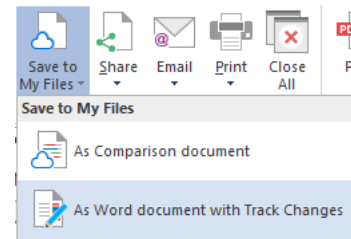
The convert to track change functionality is available from many places:

Convert the open redline to a track change document - In the **Home** tab, click **Word** and then **Open in Word with Track Changes** or right-click in the redline and select **Convert to Track Changes**.



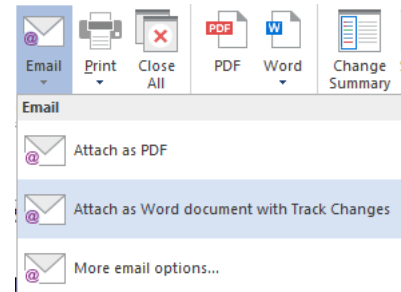
Save the redline as a track change document – click **Save As** and then **Word document with Track Changes**.

Save the redline to Workshare Connect as a track change document - click **Save to My Files** and then **As Word document with Track Changes**.



Share the redline on Workshare Connect as a track change document - click **Share** and then **As Word document with Track Changes**.

Email the redline as a track change document - click **Email** and then **Attach as Word document with Track Changes**.



## Comparing from NetDocuments

When using Send to Application in NetDocuments, the Compare document selection dialog will now be displayed by default. This means users can further define their comparisons. For example, they can switch the original and modified documents or they can add further documents to compare. They can also change the rendering set applied and use the Fast comparison mode.

This is controlled by the **Display document selection dialog when using Send to Application** parameter in the WCM (**Integrations>NetDocuments**).

## Emailing changes only

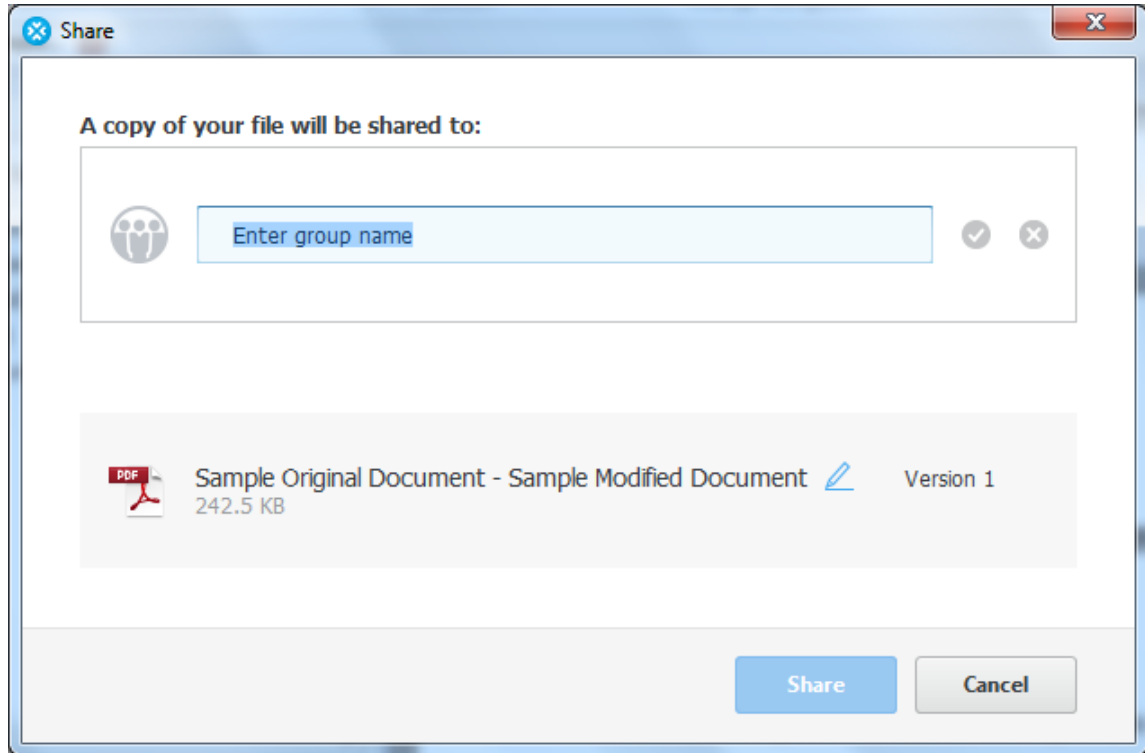
There is a new option in Workshare Compare that enables users to send only the pages with changes when sending redline documents by email. The option is called **Attach as PDF (only pages with changes)** and is found under the **Email** option in the **Home** tab or File menu. This is useful when comparing lengthy documents and changes only appear on a few pages. Using this new option, only the changed pages in the redline are converted to PDF and a new email window is opened with the PDF attached.

## Compare footnote changes

Users have always been able to compare footnotes and endnotes using the **Compare Footnotes** parameter in the rendering set. Now there are 2 parameters relating to footnotes/endnotes. The new parameter (added to **Comparison Options**) is called **Detect Footnote/Endnote Numbering Changes**. This way users can still detect changes to footnotes/endnotes but they can choose NOT to detect changes to footnote/endnote numbering.

## Saving and sharing redlines to Workshare online

With Connect installed, you can save redlines to Workshare online so they will be accessible to you online at all times and you can share redlines to groups in Workshare online so you can collaborate on them with others.

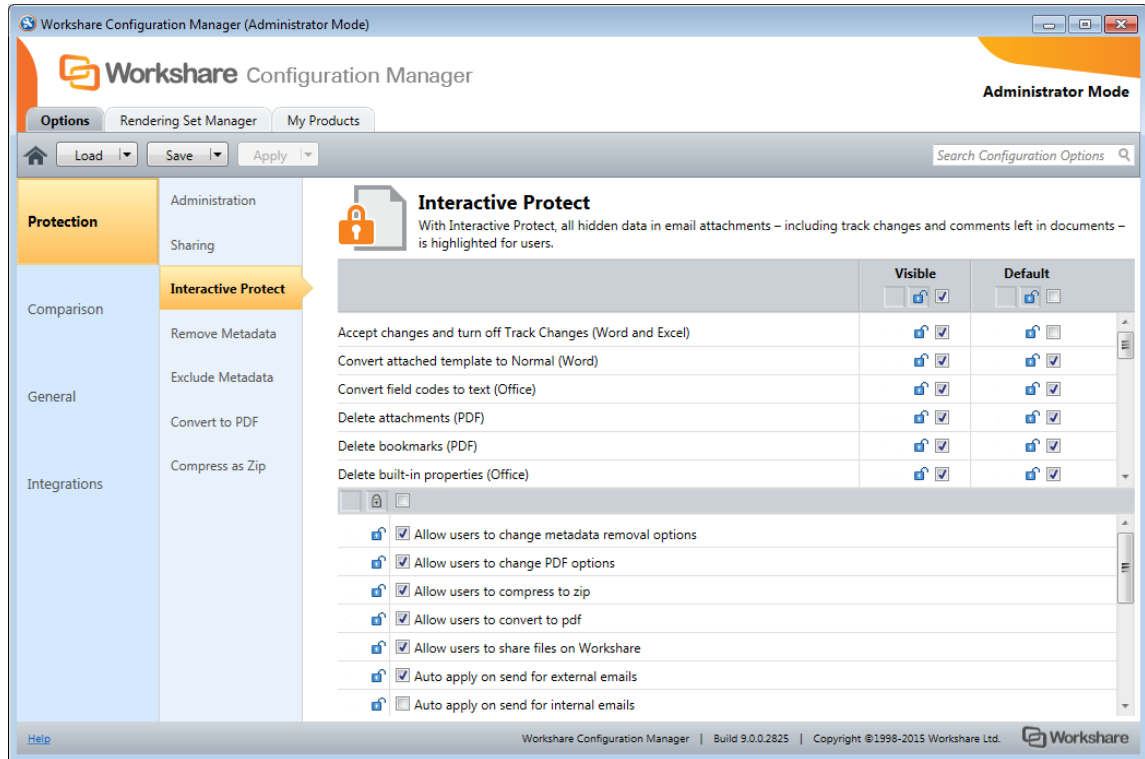


You can save the redline as a Workshare Compare DeltaFile (WDF), which contains all three documents (original, modified and redline) as well as your 'Accept' and 'Flag' selections. You can also save just the redline as a DOC/DOCX, RTF, HTM, TXT or PDF file or you can save the redline as a track change document. The redline is saved to **My Files** (inside **Folders** in Workshare online).

You can share the redline as a PDF file or you can share the redline as a track change document. The redline is shared to a group in Workshare online and a link to the redline is sent to group members by email.

## Interactive Protect customization

There is a new category in the Workshare Configuration Manager – **Protection > Interactive Protect** – dedicated to Interactive Protect. In both User and Administrator mode, you can set which metadata will be visible in the Interactive Protect panel and whether it will be selected and cleaned by default.



In addition, administrators can set:

- What specific areas are available to users in the Interactive Protect panel and whether users can change settings in those areas – for example, Administrators can hide the **Convert to PDF** section or leave it visible but not allow users to change options within it.
- To automatically apply Interactive Protect settings even when the user does not click **Apply**.
- When to automatically display the Interactive Panel.

## Interactive Protect – automatic apply

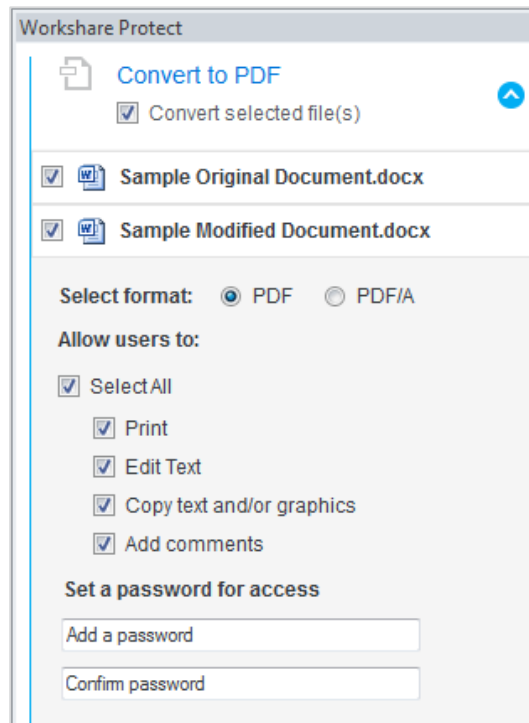
Previously, when the user did not click **Apply** in the Interactive Protect panel, the default profile would be applied to the attachments. Now, if the user does not click **Apply**, one of two things could happen:

- If the parameter to automatically apply on send is selected in the Workshare Configuration Manager (**Protection>Interactive Protect** category), the Interactive Protect settings made in the panel will still be applied when the user clicks **Send**.
- If the parameter is not selected, no processing will occur.

*Note: The **Auto apply on send for external emails** parameter is selected by default and the **Auto apply on send for internal emails** parameter is NOT selected by default.*

## Interactive Protect – PDF individual attachments

With Protect 9, you can now select to convert individual attachments to PDF in the Interactive Protect panel rather than selecting to convert all or none.



Finally, the Interactive Protect panel now displays in the main Outlook window as well as the message window.

## Protect – sending large files



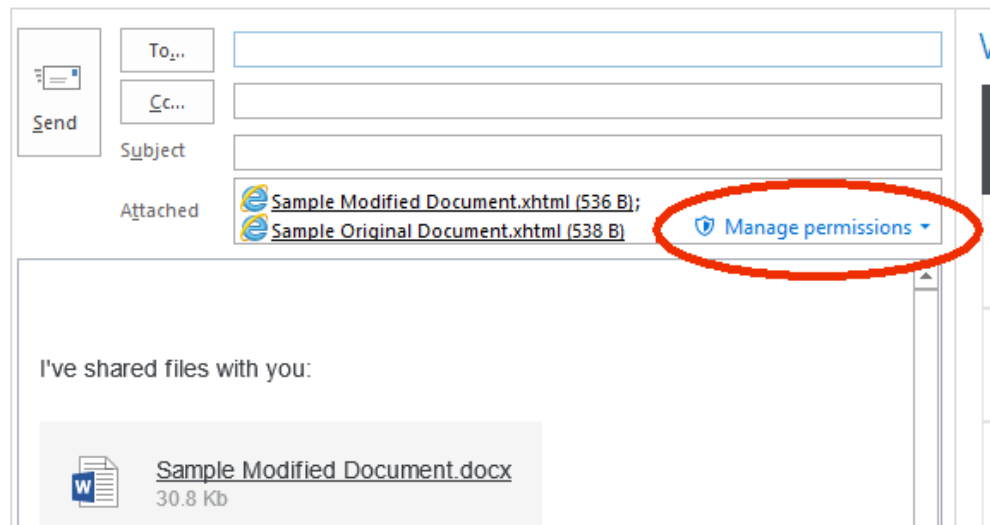
The Add Large Attachment button is now called **Attach as Link** and it is displayed by default. Use the **Attach as Link** button to save a large file to a folder in Workshare and send recipients a link to the location.

Interactive Protect can be configured to automatically send a link to files when an attachment exceeds a specified size. In this scenario, as soon as you attach a file above the specified size, they are automatically converted to links. This is configured in the Workshare Configuration Manager (**Protection > Sharing** category) by specifying a value for the **Automatically convert to link(s) when total attachment size exceeds (MB)** parameter.

Interactive Protect can also be configured to automatically select the convert to link option in the Interactive Protect panel when an attachment exceeds a specified size. In this scenario, as soon as you attach a file above the specified size, the **Replace all attachments with a link** checkbox in the **Convert to link** area is selected when the Interactive Panel displays. This is configured in the Workshare Configuration Manager (**Protection > Interactive Protect** category) by specifying a value for the **Automatically select 'Convert to link' when total attachment size exceeds (MB)** parameter.

## Protect – manage permissions

When you upload attachments to Workshare and send recipients links to the files in Workshare, you can set access permissions for the Workshare folder. For example, you can specify that access to the folder will expire after a certain date or that members of the folder can only view files and not download. Now you can modify those permissions after converting attachments to links but before sending your email using the Manage permissions option in the attachments bar.



## Protect - links shortcut

Whatever the Protect user experience set up in your environment, when you have a shortcut on the attachment bar, you can convert your attachments to links in a single click.

This is configured in the Workshare Configuration Manager (**Protection > Sharing** category) by selecting the **Display Link on attachments bar** parameter.

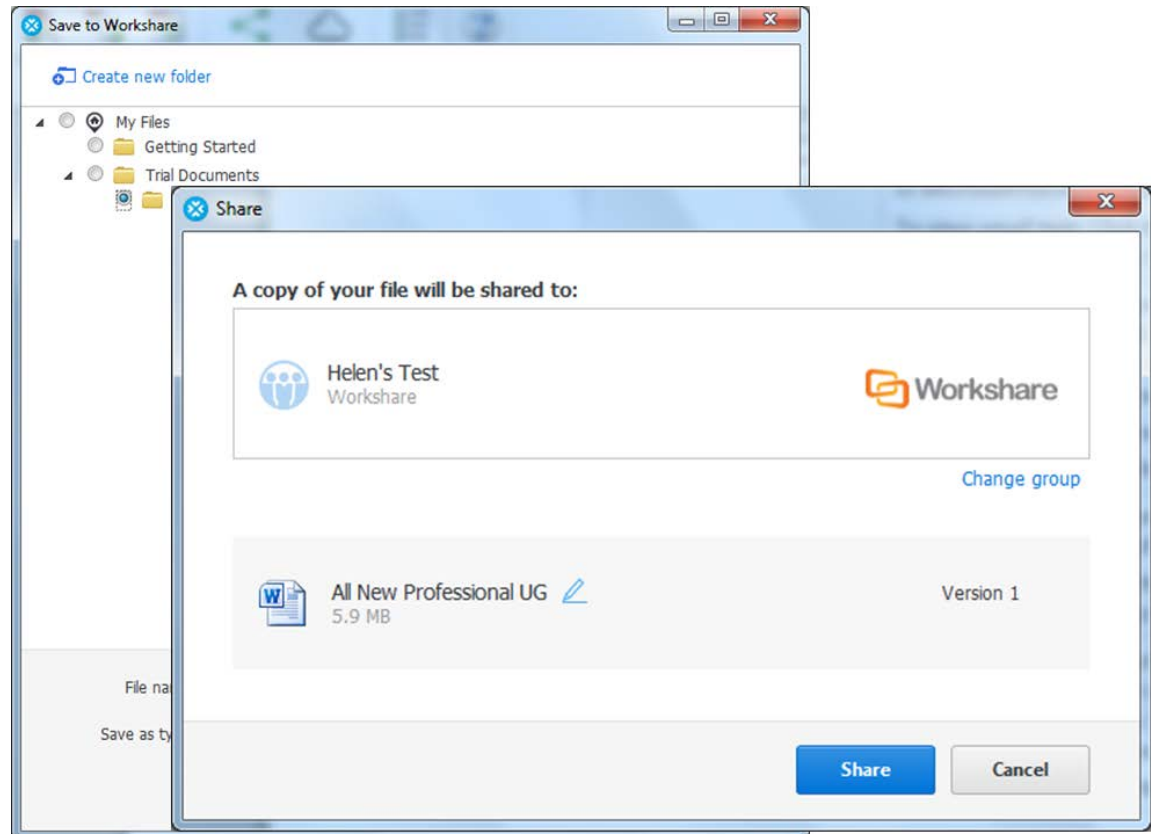
## Protect – additional Exclude Metadata parameters

The **Protection>Exclude Metadata** parameters enable you to exclude certain types of metadata from being removed when documents are cleaned. The types of metadata that can be excluded from cleaning are custom properties and field codes from Office documents and now markups from PDF files. When cleaning, the user can still select to clean these types of metadata and all custom properties, field codes or markups will be cleaned, except for the ones explicitly excluded in **Protection>Exclude Metadata**. These parameters apply when Workshare Protect is cleaning attachments (using Interactive Protect, the Protect Profile dialog or the Email Security dialog) as well as cleaning open Microsoft Office documents. The two new parameters are **Exclude Annotation Links (PDF)** and **Exclude Annotation Widgets (PDF)**.

## Save/share to Workshare online from Microsoft Office

With the Connect element installed, you can save your Office documents to Workshare online so they will be accessible to you online at all times and you can share your files to groups in Workshare online so you can collaborate on them with others.

You can save and share Word, Excel and PowerPoint files in their native format or converting them to PDF as you save or share. The file is shared to a group in Workshare and a link to the file is sent to group members by email.



## Workshare desktop app

The installation of the Connect element includes an updated desktop app - the application that syncs content between Workshare online and your desktop. This means that even when offline, you can access and review your Workshare content. You can also add updated files or new files and as soon as you are online again, they will be synced.

If your Professional installation is integrated with a DMS, the desktop app benefits from this integration too. This means, for example, when adding files to the desktop app, the default open location will be the DMS. This can be switched off in Preferences in the desktop app.

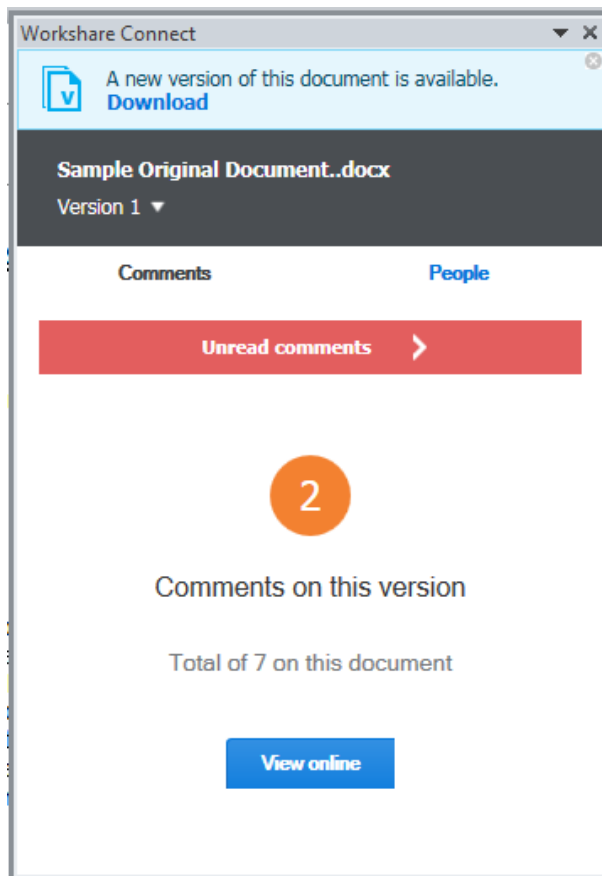


The desktop app is launched after installation of Professional and you sign in to Workshare once to retrieve license information and begin synchronization. A welcome page is displayed in desktop app.

The interface of the desktop app is very similar to that seen when accessing my.workshare.com through a browser.

## Workshare online inside Office

With the Connect element installed, you can display the Workshare Connect panel inside Office which provides a window into your shared documents in Workshare online. When you have shared a document into a collaborative workspace in Workshare online and you open the document locally, the Workshare Connect panel provides a view of what is happening with your collaboration. You can see the other reviewers (who you shared the document with) and whether they are online at the moment. You can also see how many comments have been made on the document and whether any new versions have been added to it. With a single click you can open the document in the Workshare web app and join in the collaboration by viewing comments and making your own comments.



When another reviewer adds a new version of the document, you are notified in the Workshare Connect panel. With a single click, that new version is opened in Word. Now the Workshare Connect panel will ask if you'd like to see what's different between this new version and the previous version. With a single click, both versions are compared in Workshare Compare.

## NetDocuments integration

The NetDocuments integration now includes the ability to convert documents to PDF from within NetDocuments using the send to application functionality.

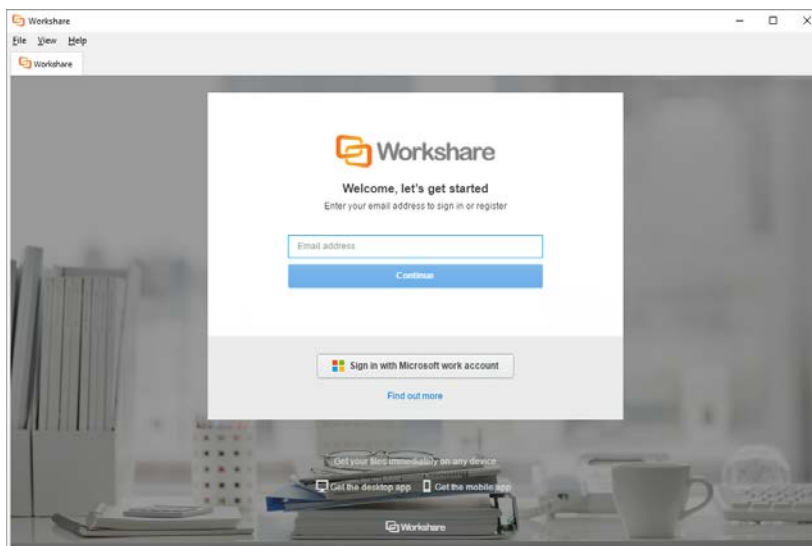
## Click-to-run certification

Workshare 9 is now certified with Microsoft's click-to-run. Click-to-run is a Microsoft streaming and virtualization technology that is used to install and update Office products.

## Licensing change

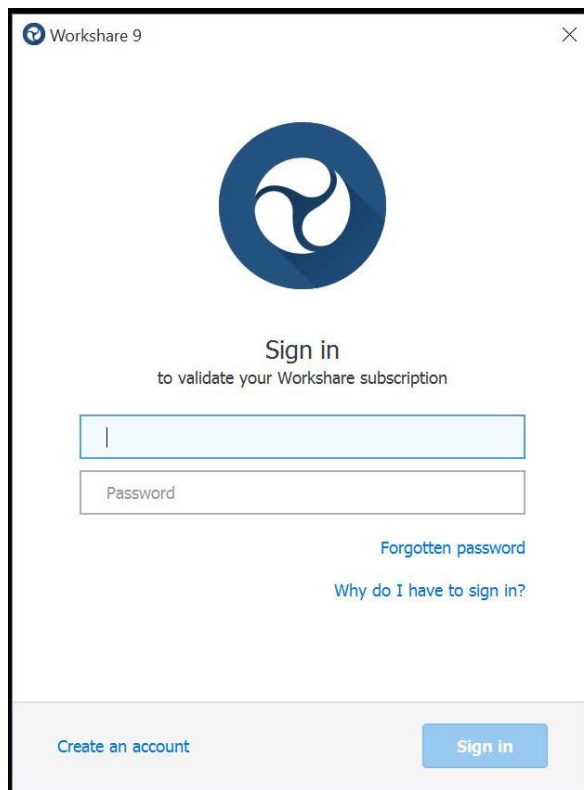
Licensing of Workshare is done via my.workshare.com. When purchasing a Workshare product, you are required to create a Workshare account. A license entitlement is created and assigned to the account, waiting to be used. After installation, you are prompted to log in to your Workshare account in order to retrieve your license entitlements. This can be in either of the following ways:

- When File Share & Sync (the Connect element) is included in the installation, the Workshare desktop app is launched after install and you will see the following:



If you do not log in at this point, then.....

- The first time you access Workshare functionality, for example, by clicking any option in the Workshare tab, you will see the following:



Enter your Workshare credentials (email address and password) and click **Sign in**. Your license entitlements are retrieved and you have access to all Workshare functionality. This is the only time a user is required to log in to Workshare.

## Options removed

Some options that were previously available in Professional have been removed because the functionality is now available in a better and more accessible way. You will no longer see:

- Send for Review, Manage Changes
- Vertical Workshare panel in Office
- Redact
- Comparing within Word
- Displaying content risk inside the Workshare panel in Word
- Classification
- Reports

## System Requirements

The system requirements for Workshare Professional 9 are as follows:

<b>Minimum System Requirements</b>	Intel Pentium 4 3.2GHz processor 1.5GB RAM 1GB free disk space
<b>Recommended System Requirements</b>	Intel Core 2 DUO @ 2.2GHz AMD Athlon 64 X2 4400+ 2GB RAM 2GB free disk space

### Certified environments for Workshare 9 (32-bit version)

Workshare 9 (32-bit version) has been tested and certified in a number of environments. If your environment is not included in the following list, it may still be a compatible environment. Contact Workshare Customer Support ([support@workshare.com](mailto:support@workshare.com)) for any help.

For details of which environments previous versions of Workshare Professional/Compare/Protect were certified against, refer to previous versions of release notes on the knowledge base.

**Note:** Unless otherwise stated, all environments are the English version with the en-us language set.

#### Operating System:

- Microsoft Windows 10 (32 bit and 64 bit)
- Microsoft Windows 8.1 (32 bit and 64 bit) + Japanese
- Microsoft Windows 7 SP1 (32 bit and 64 bit) + Chinese Simplified & French

#### Citrix:

- With Microsoft Windows Server 2012 R2 (64 bit)
  - Citrix XenApp 7.5
  - Citrix XenDesktop 7.5
- With Microsoft Windows Server 2008 R2 SP1 (64 bit)
  - Citrix XenApp 6.5
  - Citrix XenDesktop 6.5
  - Citrix XenDesktop 5.6

**Note:** Check with your Citrix vendor about which Windows operating system supports your version of Citrix.

**Microsoft Office System:**

- Microsoft Office 2016 (32 bit) – including click-to-run
- Microsoft Office 2013 SP1 (32 bit) + Japanese – including click-to-run
- Microsoft Office 2013 (32 bit) + Japanese
- Microsoft Office 2010 SP2 (32 bit) + Chinese Simplified & French
- Microsoft Office 2007 SP3 (32 bit)

**Email System:**

- Microsoft Outlook 2016 (32 bit)
- Microsoft Outlook 2013 SP1 (32 bit) + Japanese
- Microsoft Outlook 2013 (32 bit) + Japanese
- Microsoft Outlook 2010 SP2 (32 bit) + Chinese Simplified & French
- Microsoft Outlook 2007 SP3 (32 bit)
- IBM Lotus Notes 9.0.1
- IBM Lotus Notes 9.0

*Note: Interactive Protect and the replace email attachment with link features of Workshare are not supported in a Lotus Notes environment.*

**Browsers:**

- Microsoft Edge, latest version
- Microsoft Internet Explorer 11
- Google Chrome, latest version
- Mozilla Firefox, latest version

**Microsoft SharePoint:**

- Microsoft SharePoint 2013 SP1

**DMS Integration:**

*Note: Check with your DMS vendor about which Windows operating system supports your DMS.*

- **NetDocuments**

*Note: If you want Workshare to be available when using the NetDocuments **Send to application** functionality, Microsoft Internet Explorer must be installed (although it does not have to be the default browser).*

- **iManage:**
  - FileSite 9.3.1
  - FileSite 9.3
  - FileSite 9.2
  - FileSite 9.0 Update 6
  - FileSite 9.0 Update 5 (+ EMM)
  - FileSite 8.5 SP3 Update 5/6
  - DeskSite 9.3.1
  - DeskSite 9.3
  - DeskSite 9.2
  - DeskSite 9.0 Update 6
  - DeskSite 9.0 Update 5
  - DeskSite 8.5 SP3 Update 5/6
- **OpenText:**
  - eDOCS DM 10
  - eDOCS DM 5.3.1 COM only (Patch 5)
  - eDOCS DM 5.3 COM only (Patch 5 Rollup 4 & 5)
- **Worldox:**
  - GX3
  - GX4

Workshare will endeavor to support future service packs of certified environments.

## Certified environments for Workshare 9 (64-bit version)

Workshare 9 (64-bit version) has been tested and certified in a number of environments. If your environment is not included in the following list, it may still be a compatible environment. Contact Workshare Customer Support ([support@workshare.com](mailto:support@workshare.com)) for any help.

For details of which environments previous versions of Workshare Professional/Compare/Protect were certified against, refer to previous versions of release notes on the knowledge base.

**Note:** *Unless otherwise stated, all environments are the English version with the en-us language set.*

### Operating System:

- Microsoft Windows 10 (64 bit)

### Citrix:

- With Microsoft Windows Server 2012 R2 (64 bit)
  - Citrix XenApp 7.5

- Citrix XenDesktop 7.5

**Note:** Check with your Citrix vendor about which Windows operating system supports your version of Citrix.

**Microsoft Office System:**

- Microsoft Office 2016 (64 bit) – including click-to-run

**Email System:**

- Microsoft Outlook 2016 (64 bit)

**Browsers:**

- Microsoft Edge, latest version
- Microsoft Internet Explorer 11
- Google Chrome, latest version
- Mozilla Firefox, latest version

**DMS Integration:**

**Note:** Check with your DMS vendor about which Windows operating system supports your DMS.

- **NetDocuments**

**Note:** If you want Workshare to be available when using the NetDocuments **Send to application** functionality, Microsoft Internet Explorer must be installed (although it does not have to be the default browser).

- **iManage:**

- FileSite 9.3.1 (64 bit)
- FileSite 9.3 (64 bit)
- DeskSite 9.3.1 (64 bit)
- DeskSite 9.3 (64 bit)

- **OpenText:**

- eDOCS DM 10 (64 bit)

Workshare will endeavor to support future service packs of certified environments.

## Important Information

- **Secure PDFs** – Workshare Professional is unable to compare secure PDFs or convert secure PDFs to Word format. Secure PDFs are PDF files with security settings configured.
- **POP/IMAP** – Workshare Professional does not support Outlook when it is configured with a POP or IMAP account.

## Important installation information

- Workshare Professional installs program files to a sub-folder within the Workshare folder named **Modules**.
- **Install:** A user is unable to install Workshare Professional if Microsoft Windows Installer 3.1 is not installed. This can be downloaded from the following location <http://www.microsoft.com/downloads/details.aspx?FamilyID=889482FC-5F56-4A38-B838-DE776FD4138C&displaylang=en>.
- **Windows 7:** When UAC is set to **Default**, running the Workshare Professional install displays the UAC prompt. You must approve the prompt and Workshare Professional will be installed. Running the Workshare Professional MSI silently will fail when UAC is set to **Default** because the user is not given the opportunity to approve the UAC prompt. Therefore for silent installs, disable UAC.

If you have installed any Alpha or Beta builds of Workshare Professional, we strongly recommend that you first uninstall them before installing Workshare Professional 9.

## Change Requests Fixed

The following are fixed customer change requests that have been validated for this release - for more information, please contact Customer Support.

CR #	FB #	Description
00431065	19552	Local Open or Save dialog box does not appear in Excel
01041861	36415	Request the ability to set as default 'Retain attachments in Sent Item' option
01049923	37955	Comparing a document with multiple versions from DeskSite does not auto-populate the correct versions
01050670	38252	Cannot Save Attachment' error displayed when forwarding emails containing linked images in the signature
01059200	39974	Unable to send zip folder with nested msgs with attachments when using desktop profile or advanced dialog



CR #	FB #	Description
01063259	40758	Unable to clean certain Word documents when 'Small text' metadata option is checked
01065211	41047	Outlook crashes intermittently when emails are being sent with attachments externally
01067629	41605	Signature is lost when cleaning Word files using Interactive Protect.
01068870	41798	Notification bar for Interactive Protect is not displayed correctly in Outlook 2016
01068093	41816	Sending redline from Compare creates 'A program is trying to access email address information
01069681	41926	Unable to save docs with long file-names into NetDocs when include document descriptions is enabled
01069584	41958	Password dialog triggers when sending a password protected document internally
01071356	42159	pcgREline Contents are removed from text Content Control boxes when 'Small Text' metadata is enabled
01072374	42251	Error when sending email with or without attachment to multiple distributions list
01072628	42370	White field codes in footer cannot be cleaned
01072933	42372	Page layout changes from legal to letter and is missing paragraphs when saving fast mode redline to PDF
01072975	42399	Linked signature images are stripped and sent as attachments when sending email with ACN and IP enabled
01073165	42484	Unable to clean and send a pwd protected PPT/X docs when a dot (.) and name/number before file extension
01073165	42486	Protect flagging PDF signature as invalid when sending and cleaning PDF attachment
01073730	42556	Interactive Protect panel does not automatically trigger when sending a Word document as an attachment
01073730	42950	Wrong attachment sent when same document name is in use
01077148	43136	0 KB document created when saving redline after comparing long file-names documents from Netdocuments
01078338	43345	Interactive Protect removes contents from DOCX docs when sending as attachments through Worldox or LFS
01070304	42009	Unable to compare documents containing comments into 7a

CR #	FB #	Description
01072685	42813	Workshare Compare for PowerPoint incorrectly being treated as suspicious by certain applications
01066299	41355	Applocker blocking certain Workshare DLLs
01079468	43516	Error when converting Excel documents to PDF using advanced PDF security and metadata options
01076208	43060	Error creating PDF when selecting pages to convert to PDF
01049903	37953	Comments are missing when saving redline as Word document with Track Changes
01081726	43873	Comparing documents with multi-level numbering list displays incorrectly in TER view
01075838	43055	Convert to PDF, saving or emailing as PDF takes a long time to complete in certain environments
01034329	35033	Batch cleaning replicates page numbers in Word when cleaning field codes
01060396	40182	'OK' button not responding when changing document name in Modified Document field
01061759	40460	'Remove metadata' option cannot be unchecked by default in Interactive Protect panel
01058370	39770	'Do you want to save changes to this message?' dialog pops up when closing Outlook
01060865	40291	Print preview showing SFTLinkPermission XML code
01054960	39073	Cleaning particular combination of Word, Excel or PPT files results in unexpected cleaning for document properties in Word files
01047815	37364	RPC error when converting Office documents to PDF using Interactive Protect
01061739	40432	404 error page or file not found when using convert to link and sending to your own address
00135815		Document comparison failure
00141308	21453	Request to change wording of 'Hidden track change'
00142455	21442	Request to remove 'workshare default' from list of rendering sets in Word
00148200	21360	Protect triggers when PAB contact name does not match Domino Directory

CR #	FB #	Description
00160489	20804	Ability to hide/disable/password-protect Administrator Mode accessible from Workshare Configuration Manager (User Mode)
00161391	21451	Removal of "Email Address " option from the WCM
00161392	21451	Removal of "Email User Name " option from the WCM
00165075	21454	Request to honour 'Shared as' property when converting to PDF and saving as a related document
00167135	12021	Asian/Wingdings characters entered in email body when pressing backspace
00170258		Request for 'Advanced Options' to Reflect Options Set through Configuration Manager
00175397		Request for SharePoint Connector to Support SharePoint Server Farms
00180823	11725	Convert file dialog box is displayed when using 'Convert to PDF' option in Workshare ribbon
00181923		Request for Compatibility with Windows Server 2012 (and with R2)
00182223	12905	Delay of 2 to 3 minutes when sending message with lots of embedded images
00184524	14312	Request to rename Save dialog to OpenText instead of Hummingbird
00184554	14295	Attachments appear to disappear from emails when using EMM
00239158	13272/ 11291	Incorrect formatting is displayed when PowerPoint documents are converted to pdf using 'Convert to PDF' option
00293932	18597	Error: An error occurred while executing the PDFClean action for the file
00316672	20560	Attachment duplicated when cleaning email with signature
00324286	22562	Unable to send DOCX document with a comma in the filename using Clean&PDF profile
00355918	17751	Request to integrate with IBM Notes 9 (Lotus Notes)
00370359	18227	Interactive Protect GUI Incorrectly Displayed When Text Size Is Set To 125%
00374333		Request ability to set 'Interactive Protect Panel behaviour' in the WCM

CR #	FB #	Description
00374745	19796	Error message 'Contact your System Administrator ' Workshare has not been configured to send large files with current settings. Please either remove large file(s) or contact your System Administrator
00374827	18398	Ability to customize the email link text 'View these files using Workshare'
00374828		Ability to choose which file to convert to PDF
00375365	18636	Workshare Word Addin preventing word documents from switching
00377937	18638	Batch clean' options are not visible when changing text size in Windows
00385592	21593	Request the ability to select 'Profile Attribute' when saving redline to Netdocuments
00388108	16240	Links & Images are broken if the advanced risk report is viewed in Google Chrome and Firefox
00388156	18873	Save button is grayed-out when selecting workspace under cabinet folders (NetDocuments)
00402480	19008	Error: Your previous login attempt failed in Netdocuments
00407608		Ability to remove Convert to PDF or Compress all to zip options
00411910	19296	Error SolidConvertor PDF COM has stopped working.
00436120	20617	TER view display list numbering with incorrect format
00436336	20514	Request To Move ComparisonDockManagerStatePane Registry Keys To The Custom Workshare Hive
00436493		Ability to convert to pdf and zip specific documents
00436591	19682	Unable to remove White text on other background colours
00436638	19684	White text on other background colours is removed when paragraph marks are inserted
00440597	19815	Disabling 'allow users to override option' prevents other settings to function
00440630	20265	Error Professional.Options.Exporter.Launcher.ex: has stopped working
00440913		Request For Dynamic Interactive Protect Apply / Apply Changes Button
00440965	19953	Redline incorrectly rendered resulting in missing text and text running off the page

CR #	FB #	Description
00443521	19962	Ability to send Word documents with document protection and convert to PDF without prompt to enter password in interactive protect panel
00455495	20203	Comparing track change Documents results an Incorrect redline
00460632	20258	Alternate class name default to 'COMPARE' when saving PDF to DMS
00460634	20246	An error occurred while executing the clean action for the file <.pptx>
00467149	20415	Emails are cleaned when options "Apply Workshare Protect" for internal and external Email are unchecked
00467186	20400	Zip files triggers select folder dialog box
00469704	21593	Ability to attach/relate saved comparison to document saved within NetDocuments
00481282	20515	Autonomy iManage integration cannot be locked from editing in WCM
00482559	20516	Interactive protect takes long time to clean large files (14 MB)
00485191	20606	Company logo in footnotes within letterhead is incorrectly displayed in TER
00486440	20657	'Use AutoProfiling for Autonomy iManage' option causes attach/relate to modified documents to be saved in incorrect location of matter centric
00486524	20662	Equitrac is prompting when converting redline to PDF
00493349	20779	Unknown error 0x80131604 sending email after applying MS KB2863911 to Office 2013 SP0
00493363		Ability To Apply Interactive Protect Settings To 'Send' Button In Outlook
00494765	20859/ 24112	Legal Size Is Not Automatically Detected When Sending Redline As PDF, Changes To Letter
00496124	20894	List numberings are misplaced in TER view
00496127	20929	Unable to display 'large dot symbol' in TER view
00496133	20895	List numbering appears as insertions and deletions
00497408	20879	Text with no changes showing as insertions/deletions
00497412	20896	Versions Drop-down Missing When Comparing In Word 2013

CR #	FB #	Description
00498673	22332	Always show panel not honoured when adding a second attachment
00505102	20940	Page Margins Not Honoured When Redline Is Set To Letter Size And Saved As PDF
00505239	22911	Ability To Select Certain Attachment For PDF Conversion.
00506556	21044	Text in tables is incorrectly rendered
00511746	21792	Ability to Reconcile Outlook sent items with original attachment rather than SFT Link.
00513086	21100	Pages Numbers in the Footer Are Incorrectly Displayed In TER
00513139	21099	'Clean & PDF' profile causes workshare protect to hang
00513228	21150	Error: The operation required the document to be locked (0x8012000a) when saving redline to SharePoint via windows explore
00513229	22311	Ability to turn On/Off/Show alert to specific metadata found using Interactive Protect
00513252	21147	Excel hangs when 'Workshare Ribbon Addin for Office' addin is enabled
00514621	21166	Professional 8 Update 2- Adobe hangs when 'Workshare Outlook COM Addin' addin is enabled
00521205	21273	Content status built-in property is not removed from .xls files
00543116	21458	Send Link not triggers ZIP file when using custom policies
00554110	21538	Images are Incorrectly rendered after running a comparison
00558187	21593	Slow response when accessing Netdocuments from the compare documents window
00562245	21554	Shape colour changes to pattern when converting PPTX files to PDF
00597064	21575	Unable to clean password protected Excel workbooks
00610763	21694	Unable to email redline in DOCX format when comparing from FileSite
00610765	21696	Dashes in bulleted lists incorrectly changed to semi-colons in redline
00610789	21697	Error Microsoft Outlook has stopped working

CR #	FB #	Description
00619059	21831	Unable to send emails to Gmail addresses - Error in IAddrBook.OpenEntry
00619090	21833	Comparison hangs with progress bar when comparing large documents with a lot of images
00619110	21593	Ability to display 'Recently Opened' documents from Netdocuments
00627440	21891	Images with changes are not display with the coloured dotted lines when saved as PDF through Workshare
00627505	21922	Documents with multiple section pages are incorrectly printed when using Only print pages option
00628860	21925	Error after comparing documents: The document may contain text content that will be lost upon conversion the chosen encoding.
00638381	21963	Preparation failed for this comparison
00642461	21984	Sending comparison as docx or doc results in footnotes being converted to endnotes
00642462	21983	Greek characters are incorrectly displayed in TER view
00643864	22001	Standmode comparison show extra preceding apostrophe in the redline
00652004	22025	Workshare Professional Attachments(s) Alert & Compare Addin causes Illegal characters in path error
00657181	22082	Error occurred while saving this file, please try again
00659982	22713	Error: The document C:\NRPortbl\ <server name="">\&lt;username&gt;\&lt;document name&gt; failed to check in. The changes will be saved locally. Please check in the document locally</server>
00660000	22134	AutoProfiling error: Unknown error 0x80040157
00660039	22135	Error returned from a call to a com object - Interactive Protect
00662956	22180	Workshare was unable to create a reply. Ensure that your default mail program in internet explorer is set correctly
00662998	22182	Ability to remove or supress OCR warning message when comparing scanned pdf's
00662999	22183	Request to have alert message if the user makes changes in interactive protect and does not click apply button

CR #	FB #	Description
00663051		Request to integration between protect Server and professional so that items cleaned in protect Server are not prompted in interactive protect
00667271	22293	Text boxes are incorrectly formatted in the redline when using fast mode
00668623	22296	Redline size incorrectly changes from legal size to letter size when printing
00670025	22757	Text is missing or moved down in numbering list
00682594	22485	Documents created with Japanese characters are incorrectly saved when compared in fast mode
00682762	22558	PDF conversion forced if PDF/A is set as default
00684325	22661	Unchecking PDF/A option from advanced dialog box unlock the PDF security settings in WCM
00685757	22683	Error this command line is not available when cleaning small text
00685759		Request for send button to process metadata based on the state of interactive panel without clicking apply
00724148	23042	Error illegal characters in path when sending a zip file with Japanese characters
00732304	23124	Opening word attachment from outlook takes 20-30 seconds to load
00732402	22311	Ability to remove ZIP feature from Interactive Protect panel
00732425	23157	Incorrect deletion shows up when using page breaks and section breaks in TER view
00733808	22930	Metadata discovery not available for these files: DOCX, PPTX, XLSX
00735264	23250	Cross-references are removed when sending Word document and converting to PDF
00746265	23338	Error 'This command is not available' when cleaning hidden text
00746297		Request to suppress interactive protect panel showing when inserting unsupported file types
00750458	23430	Error 'Range cannot be deleted' when cleaning hidden text
00755998	23471	Illegal characters in path error when converting Word documents to PDF
00756028	23470	Error : Unable to convert redline to word



CR #	FB #	Description
00773954	23574	An error occurred while executing the PDFclean clean action for the file
00776945	23744	Grammatical Error : A footer were detected in your attachments
00777003		Interactive panel remains after clicking apply
00777042	23825	Copy of emails remain in outbox folder when using send document from DeskSite
00777116	23918	Remove metadata option does not remain unchecked after clicking apply
00777117	23863	Grammatical errors displayed in the risk analysis pane
00778538	23878	Outlook hangs when sending certain pdf links
00778566	23941	Object reference error when sending email via 'Direct replies to' option
00780255	24024	Long delay emailing certain XLSX file(s)
00780404	24101	Clientprofiles policies are not honoured when 'Enable automatic generation of default profile' is disabled
00780440		An error occurred while executing the clean action for the file
00808596	24532	Missing numbering list when comparing word documents in fast mode
00818704	24711	Excel document with hidden sheet crashes when using print option
00823080	24807	Autoprofiling error: Error description unknown error 0x80040157
	16358	PDF/A file is sent as PDF after cleaning metadata
	20735	Protect Files button is not enabled when we add encrypted zip file containing files in a folder
513225	21144	French characters are incorrectly OCR'd
173041	21325	Unable to compare encrypted PDFs
132446	21436	Ability to limit save as redline doc types
	22218	Compare for PowerPoint path is populated in original and modified fields, while clicking on 'swap' button
	22474	"Unable to clean" error is displayed while cleaning excel document through content risk option in Workshare ribbon

CR #	FB #	Description
	22673	Headers & Footers are positioned to left side in comparison document when applied using 'Apply agreed changes' (actually, it was positional tabs not being written to the output)
	23060	Error is displayed in Workshare Compare for PowerPoint after opening checked out presentation created in iManage
777006	23827	Workshare Ribbon Addin for Office causes Excel shortcut key dialog boxes to be hidden
	24073	Track changes are not cleaned in batch clean when Lightspeed clean is ON
	24222	User is unable to perform Workshare Combine/Convert to PDF actions on shared encrypted Excel document
	24641	Password prompt appears again, while converting encrypted Excel/PowerPoint document to PDF with pages option enable
823202	24922	Opening Word attachment with track changes takes 20-30 seconds to open
	25228	Workshare Compare keyboard shortcuts dialog is not updated to latest in DeltaView
	25379	Apply change update - Error message box improvement - show word at same time as failure message box
	25844	Document is corrupted while sharing encrypted documents through IP without applying Password on IP pane
	25901	Object Reference..' error banner is displayed while performing Share operations in new mail window
837874	26035	Comparing track changes documents in fast mode with list numbering results in incorrect results
	26045	Update the Ribbon control bar to version 23.2, which is used in Compare(DeltaVw)
	26046	Compare for PowerPoint crashes after performing Save as action to save comparison result
818673	26048	Images are not displayed
847353	26204	An error occurred while executing the clean action for the file.
	26268	User is unable to compare the documents having only 'modify' password in 'Standard' mode
	26310	Version is not added to the file in latest folder if we perform 'Save to My Files' after performing 'Save as' action

CR #	FB #	Description
	26331	In Interactive Protect. post to groups not correctly rendered with large fonts
	26335	There was an error...' is displayed while performing 'Open in Word..' action on PDF document
	26340	"Please select compare.." error is displayed when we launch WCA/WCM after deleting all default rendering sets.
	26403	User is navigated to Group instead of file preview when we click on 'Link to file' link on Share dialog
	26478	WCM options are not reflected to latest build after upgrade
	26509	Different behavior is displayed while clicking on Share from ribbon and Connect pane for unsaved document
863057	26537	Installation error when old version of Microsoft Visual C++ 2012 Redistributable package is installed
	26640	Comparison of password protected .doc and a rtf document fails in FAST mode
874122	26718	Outlook crashes when using 'Close original message window when replying...'
	26946	[Mixpanel] Update user-agent in http header with installed product and version
665797	27094	OpenText eDocs DM10 support
	27325	Default ACN panel to open
963995	27366	Request to sign all Workshare dlls
967394	27533	Unable to apply changes when saving comparison as track change document
889856	26982	New Terminal Server Registry keys for Professional 9
876202	27326	An error occurred while executing the PDFclean clean action
912598	27328	Right-click menus integration missing from DeskSite and FileSite 9.0 update 6
855625	27329	Request to display 'Comparison in progress' prompt
964856	27397	Add "Why do I have to sign in?" link to Sign in dialog
920183	27115	Turning off Connect panel not remembered
947115	27512	Please select Compare or Protect Module' when installing Workshare.Professional.msi
	27371	Enhance licensing

CR #	FB #	Description
00946922	27286	'Workshare.Woldox.Connector.exe has stopped working' when comparing documents
00967379	27507	Object reference not set to an instance of an object when clicking forward
00968276	27602	Unsaved changes are not detected in the redline
00981861	27954	New attached files are not triggered in window reply
	28097	Workshare 9 msp build failure
	28380	Update the reminder/expired pages to allow the user to refresh the license without having to click on Purchase Now
00805582	24424	Email signature is not populated when using send document menu from DeskSite
00946984	27331	Comparing documents show extra pages in the redline
00986086	27558	'Only print pages with changes' option prints all the pages where footnotes have changed instead of a single page
	27568	"Error saving.." is displayed when cancelling share dialog from Workshare Compare when loading is in progress.
	27629	Profile setting changes are not reflected in Workshare Configuration Manager after loading wso file
00976102	27712	Spal.dll error is displayed on launching Outlook
00976274	27911	Warning message the following changes will not be applied to your document
	28014	Workshare options are displayed twice in PowerPoint, when we run Workshare Configuration Assistant after running Citrix terminal registry keys
00665920	22295	TER view shows text overlapping
00989431	27008	Create new NetDocuments SendToApplication
00966052	27505	'Apply Accepted Changes' button missing when screen display is set to 125%or 150%
00958369	27349	Zero byte file created when running PowerPoint comparison from command line
00967383	27531	Error "Compare for PowerPoint has encountered a problem" when double-clicking any text under change summary
00874281	27607	List numbering appears underlined in TER view

CR #	FB #	Description
00980358	27921	Workshare Configuration Manager shows incorrect Connect subscription type
00996034	28761	Comparison hangs with progress bar when documents contain macros
00121861	21440	Ability to compare marks/values of checkboxes within a document
00125114	19852	Ability to utilise Outlook default font when emailing from Compare and Word
00170823	7528	Fully justified numbered paragraphs change when comparing certain documents
00177830	22448	"Prompt to save redline on close" option does not prompt to save unless "Allow document to be saved as new document" option is enabled
00439186	19679	Open in Word with Workshare' option cannot show all pages
00454181	20257	Table deconstructed when running a comparison
00454188	20256	Table falls off the page when running a comparison
00735206	23202	List numbering incorrectly rendered in TER view
00799046	29794	Saved changes are not compared against the previous version
00866083	26854	Interactive Protect not triggered using Outlook 2013 in window reply
00874094	26700	Protect .policy files are not created during installation
00876091	26879	Password required dialog box is displayed when cleaning non-password protected pdf
00889807	26976	Metadata detection does not trigger Interactive protect panel
00926073	27246	Sync icon missing from WorkSite group in Outlook ribbon after installing Pro
00958128	28371	Best Authority plugin does not function correctly when Workshare add-in is enabled
00958370	27348	Duplicate interactive panel appears when Egress switch add in is enabled
00969679	27678	Unchecking all metadata types in Interactive Protect panel cause skip cleaning the entire document
00969734	27679	Adjusting Quick Access Toolbar commands not remembered within Word

CR #	FB #	Description
00969761	27704	HKCU settings are not applied when changing options in WCM (Admin Mode)
00971484	27804	Ability to enter proxy server details in the Configuration Manager
00975120	27869	Request for interactive protect panel to automatically expand and show the metadata removal choices
00981878	27934	User is unable to connect to SharePoint 2013 via HTTPS url through WCM.
00984388	28073	Retain attachments in Sent Item' option does not attach a copy of the attachment
00996219	28887	Ability to remove the added .pdf extension once using Convert to PDF and saving into FileSite
00996262	28738	Black boxes appear in TER view & text "falls off" the page
01000802	29045	Custom macros not being saved to normal.dotm
01006636	29445	Outlook hangs when Workshare Ribbon Add-In for Microsoft Office is enabled
01011177	29739	"Help" article "Launching Workshare Compare from MS Word" is out of date
01013440	30121	Redline is displayed with black background when comparing documents created
01014630	30315	Unable to preserve changes to normal.dotm
01999887	29084	Workshare temp files/folders are not being removed automatically from %temp%
	28950	WCM hangs when clicking on 'Login' button after changing 'Use server' option
	29162	Typo in text beside to 'Workshare Professional' option on 'Send To Application' dialog.
	29113	Include latest released version of Connect for Desktop
	29138	ACN to work on internal emails even when no cleaning takes place
	29259	ACN for Reading Pane emails
	29727	Share to Groups email HTML redesign
	29741	Improvements to Accept/Reject functionality
01014191	30157	Extra blank pages are created when comparing certain documents
01006654	29475	The rendering view shows boxes around each line of text

CR #	FB #	Description
01013475	30125	Workshare Compare unable to select a document from configured document provider
01014759	30351	List numbering renders incorrectly in TER view
01016425	30735	Password required dialog options are incorrectly displayed on Japanese version of Windows 7
01018668	31096	OK and Cancel buttons in Password required dialog are not visible when display is set to 125%
00778603	23887	Active setup registry keys are not created at first login
01001716	29121	"There was a problem with the installation - Fatal error during installation" when Connect is already installed
01012127	29864	Unable to uninstall Professional 9 using the MSI
01012247	29879	Workshare Protect metadata removal policy error: The system cannot find the file specified during installation
01013361	30088	Workshare repair window appears upon launching Workshare Configuration Manager for the first time
01015067	30409	Launching any Workshare Help file triggers an MSIEXEC repair of Workshare Professional
	30465	Unknown publisher text is displayed on UAC dialog while installing Professional bundle
	30837	Upgrade.Bundle.exe does not update version number in Programs & Features
	24500	Metadata related options are not disabled when 'Remove metadata' checkbox is unchecked
01017144	30813	Sign in window pops up when inserting a 'Text from File' in Word
01018854	31213	Interactive Protect hangs during discovery contents for Excel files
00989357	30911	Please login to a server is displayed when using Offsite
01004885	30571	Error "Cannot edit Range" when cleaning documents with small text
00682433	19867	Default redline save format selected in Workshare Configuration Manager is not applied when saving comparison to Worldox
00523915	21274	Search not responding after clicking load defaults to default in Workshare Configuration Manager
00166684	22454	Changes to speaker notes in moved slides not detected

CR #	FB #	Description
00682812	22600	No progress bar displayed when clicking Send and Protect if 'Email security dialog while discovering risk' is set
00811694	24569	Alignment changes in tables when opening redline in Word
00829479	25338	Grammatical error after applying patch from CR 00724148
00836047	25935	File names from the zip file are incorrectly displayed in Interactive Protect panel
01011210	29738	PDF documents produce overlapping text in redline
01011276	29758	Redline shows the same em-dash symbols (unicode 0x2014) as inserted and deleted
01012049	29814	Highlighted text changes from yellow to dark grey on comparison when using Fast mode
	29996	Workshare didn't detect any changes' banner is displayed for all emails which containing documents with WS Tracking ID
01013134	30006	Date and letterhead with text boxes are shifted toward the center
01014638	30316	Error in Action. The following error occurred while executing the Clean action for the file <name>
01014724	30349	Unable to delete document reviewers
01015499	30533	Random changes in multi-level list numbering
01015810	30578	Numbering lists are missing in the redline when comparing in Fast mode
01016055	30703	Class name appears blank although Alternate class name is set to 'COMPARE'
	30738	Workshare didn't detect any changes' banner is displayed when opening the Automatic Change Notification triggered mail after forwarding it
01016053	30756	Ability to change default save location for Apply Accepted Changes document
01014520	30814	Redline opens in Word compatibility mode
01017455	30867	Failed to compare documents and return to file selection dialog
	31288	Password prompt is not displayed when sending protected document through Interactive Protect panel
	31337	BCC warning dialog is not displayed when sending document through Add Large Attachments from Interactive Protect panel



CR #	FB #	Description
	31575	Error is displayed if user performs Secure File Transfer action for the second time and clicks 'Apply' while forwarding a mail
	31602	All sections in Interactive Protect panel are not displayed when document is attached after performing Secure File Transfer action in rich text format
	31612	File shared information is not updated in the mail body after performing Secure File Transfer action in rich text format
	31710	Automatic Change Notification is not triggered for the emails that are sent by unchecking "auto apply..." option with interactive Protect
	31425	Cleaning metadata process is cancelled for all files when cleaning for password protected file is cancelled
	31753	Skip button not displayed on the password dialog
	31754	Skip button on Excel sheet password request dialog not working
01021837	31914	Numbering bullets are incorrectly displayed as squares after saving the redline to PDF
	31327	State of "Get return receipt" option is changed if user unchecks "Recipients can invite others to this folder" option.
00471003	20441	Get return receipt does not work if users are not logged in
	30218	New UI of 'change summary' is not displayed in screenshot image when installing Compare standalone build
	31933	Secure File Transfer and inline view related information is not updated in Help file
	31741	New Connect user password policy
	30835	License expired/unvalidated/missing error messages
01015369	30483	Ability to set 'Remove metadata' option unchecked by default in Interactive Protect panel
	30806	Enable Send Files Securely as the default
	30808	HTML update for Send Files Securely
	30809	Automatically enable Secure File Transfer checkbox when total attachments over X MB
01017395	30866	Request to be compatible with DeskSite/FileSite 9.2
	30926	Extend the Phone Home functionality to transparently update features

CR #	FB #	Description
	30968	Update Help files and Quick Start Guides
	31737	Rename option display text
	31740	Update date: Copyright ©1998-2015 Workshare
01021897	31800	Request to show NetDocuments server location for Australia
01026793	33140	PDF conversion and print queue pauses when converting Word document to PDF
	34109	Changes cannot be..' is displayed in the results when performing search using 'Search original document text'.
	32894	Office 2016 Support
	33137	Convert to PDF button causes Microsoft Word to freeze up upon opening another document
	33986	License Notification Nags are not displayed when user has below 30 days of license
	31409	Unable to create PDF/A documents using 'Combine Files in Workshare' option.
	32395	Page number and Line number is shown as '0' for comments in Change summary pane while comparing certain documents.
	32555	Comments information is lost when the comparison is saved in .docx format
00815884	24700	Incorrect rendering of brackets that contain manual list numbering
00993603	28648	Sharepoint integration error: The document needs to be saved
	30234	Modified path also displayed in selection window,when comparing word document after performing Open in Word for PDF
01014754	30350	Unable to convert PPTX with gradient fill shapes to PDF
00181862	30698	Append document IDs to the redline file name not working correctly
01015365	30737	Reviewers are not preserved after opening redline in Word with track changes
00552708	30951	Comparing font type with 'Bold' in the font name produces Times New Roman text in redline
01018726	31140	E-mail messages are stuck in the Outbox in Outlook

CR #	FB #	Description
01019166	31290	Email as Word document with track Changes does not honour redline filename
00996226	31298	Missing Workshare icons on Filesite ribbon in Outlook
01020011	31385	Unable to copy redline file.
01020495	31513	Outlook default font changes when emailing from Compare
01020714	31572	Spell checking skipped when using 'Send and Protect'
01020888	31643	An error has occurred when attempting to save the redline while running comparison through Command Line
	31793	Interactive Protect panel is not updated in expected way when valid password was entered to 'Password required' dialog
01022466	32045	Converting a Word document to PDF via the Word ribbon causes the next document to be opened to not function
01022446	32097	The following error occurred while processing the email :Member not found. (Exception from HRESULT: 0x80020003)
01023200	32431	Highlighted text losing highlight when saving comparison as PDF
01024051	32569	"The following changes will not be applied to your document" error when Applying Changes
	32606	Update current instances of 'Autonomy' icon\text in Pro to New 'iManage' icon\text.
01024367	32616	Content risk remove fails in Excel when macros is checked
01024419	32636	List numbering are incorrectly displayed in TER view when using Fast Mode comparison
01025665	32833	Comparison reverts to selection dialog box when comparing specific documents
01024418	32897	Quick Search Panel not showing in FileSite Open dialog box when browsing documents in Compare
	33036	An error occured..' dialog is displayed when uploading the documents into Workshare App from SharePoint
	33186	Convert to Link option is enabled by default, if user removes .wsl document and then attaches normal document.
01027538	33252	Document reviewers are not being removed from DOCX files using Interactive Protect

CR #	FB #	Description
01026878	33349	Page layout in redline drifting between portrait and landscape
	33394	Unable to save documents containing # character to NetDocuments
01028359	33442	Cannot save the attachment. The operation failed. An object cannot be found
01028397	33493	First page in redline shows as grayed out when comparing documents including pictures
	33982	Only one attachment is detected for processing if unlicensed - other attachments are not listed in Interactive Protect pane
	34000	Error dialog is displayed when user tries to share files to themselves
	34029	PPT Compare application crashes when user tries to create the comparison report
	32571	Document needs to be saved' message is displayed when user tries to perform 'Combine files' option to document from SharePoint
01019161	31299	Remove temporary file attribute when creating PDFs
01023002	32176	Treat .asd files like regular unsupported files instead of alerting to metadata
01029834	33780	Workshare.PdfCreator.exe, Workshare.Pdf.Combine.exe and WINWORD.exe processes do not terminate
01034301	34882	Pro9 Update 4 - Ability to allow redline to be versioned to the original/modified document in FileSite
01036003	35254	Professional 9 Update 5 - Request for compatibility with iManage 9.3
01012085	29815	List numbering missing after converting redline to track changes document
01029324	33783	Professional 8 PR1 - Workshare does not honor Filesite Open/Save dialog configurations
01030077	33886	Pro 9 MR4 - Incorrect spelling for the word 'seperated' in Convert to PDF dialog box
01030289	34001	Pro9 U3 - Emails are not tagged on first attempt using ePredict for WorkSite when Interactive Protect is enabled
01030971	34143	Pro9 U4 - Search text near a change option in change summary show incorrect results

CR #	FB #	Description
01032200	34340	Comparing documents with logo in header results in misplaced logo in middle of TER view
01033821	34723	Password required dialog for protected Excel documents displayed out of screen
01033881	34725	Error: 'Workshare Compare has stopped Working.' when comparing specific documents in Fast mode
01033966	34727	Cleaning options under PDF security in Convert to PDF panel do not match with Content Risk settings in WCM
01034311	34881	Word document zoom level resized when converting to PDF within Word
01034539	34923	Compare hangs/does not terminate comparison when clicking cancel
01034821	35034	New changes of attached document are being removed by Interactive Protect
01038660	35866	Pro9 MR5 - Footnotes changes are incorrectly displayed
01039357	35974	Content discovery failed when emailing redline with track changes
01043011	36837	Redline summary shows incorrect time stamp
01023253	32288	Open document should populate modified field in doc selector window
01041955	36486	Contents are removed from text Content Control boxes when locking options set
1027352	36925	Standard comparison mode displays Greek characters incorrectly in TER view
1030354	34002	Document with +62 characters in file name is truncated on Workshare Protect progress bar
1033283	34722	PDF documents take long time to compare
1038512	35838	Unable to skip cleaning speaker notes in PowerPoint when using cleaning options from the Convert to PDF panel
1040126	36160	TER view and the redline results are incorrectly aligned when comparing Word documents with pleading lines
1046952	37224	Email signature not populated when attaching comparison to email using Compare
1046985	37229	Fast mode comparison shows extra preceding apostrophe in the redline
1048126	37480	Tables in footer cut off in TER view with MacPac templates

CR #	FB #	Description
1049794	37950	0 byte or empty file when comparing documents with long filename and saving redline as Word document with Track Changes to FileSite
1051564	38410	Warning message: "Same Document. The original and modified documents are the same! Do you want to continue?" when comparing two different Excel versions in FileSite
1057021	39457	Excel hangs when using Workshare Content Risk
1054745	39042	Table borders disappear from redline summary when comparing documents in fast mode
1054960	39073	Cleaning particular combination of Word, Excel or PPT files results in unexpected cleaning for document properties in Word files
1054371	38927	Incorrect formatting in Word after applying accepted changes
1054337	38929	Redline appears almost blank when saving or printing as PDF
1043080	36649	Error: "Unexpected error. Value cannot be null. Parameter name: value" when using Interactive Protect
1020495	31513	Outlook default font changes when emailing from Compare
1021951	31802	Turkish characters are incorrectly rendered in TER
1058414	39794	'Some files are in unsupported formats' message appears in Interactive Protect panel when emailing comparison documents
1026818	33057	Save As File Format is not been populated when saving a redline into Worldox GX3
1039572	36835	Ability to integrate with 'Click-to-Run' Office 2016
1048921	37703	Ability to send a PDF of changed pages only
1032094	34293	iManage servers instances are removed when disabling the option 'Allow users to override'
1037434	35579	Temp file path shows instead of actual path for the modified document when comparing from OpenText
1044539	36834	Attachment duplicated when using 'Recent Items' to attach a document
671392	37018	Attachments change order after cleaning using Interactive Protect

CR #	FB #	Description
1033911	34728	"Error! Missing test condition! Unexpected End of Formula" in footer in saved redline

## Known Issues

The following are known issues in the Workshare Professional 9 release - for more information, please contact Customer Support.

ID	Details
<b>01028440</b>	Editing a rendering set on the fly does not prompt to save as a new set or overwrite the current rendering set.
<b>01018577</b>	Worldox document footer stamps are not updated when saving a comparison via Save As in Workshare Compare.
<b>01018743</b>	Font changes to Times New Roman in email body when sending documents to groups from Interactive Protect.
<b>01012100</b>	The account or company name is not displayed in File > Help > About in Workshare Compare.
<b>42137</b>	'Index was out of range. Must be non-negative and less than the size of the collection.' Error is displayed when comparing certain PowerPoint files.
<b>41891</b>	Toggling PDF and PDF/A options in the Convert to PDF dialog causes PDF security configuration and password protection options to be disabled (64-bit version only).
<b>41723</b>	Password dialog displayed at inconsistent times in the comparison process depending on whether using Standard or Fast mode (64-bit version only).
<b>41547</b>	Incorrect theme is highlighted under 'Select' drop-down when comparison is done from command line.
<b>41284</b>	Files are not listed in recent comparison list when PowerPoint compare is performed with server documents.
<b>40597</b>	Local File Store dialog is displayed when browsing for files in the desktop app when DMS is set as default (64-bit version only).
<b>40574</b>	User is not automatically logged into Professional after logging into the desktop app first (64-bit version only).
<b>40484</b>	There is a spelling mistake in the 'Change Summary' button tooltip.
<b>40469</b>	Newly created theme does not appear in the 'Select' drop-down list in the Comparison Themes section.

ID	Details
40430	'Color is not resolved yet' error is displayed when at least one document contains Opulent design background.
40418	'Index was outside the bounds of the array' error is displayed while comparing specific documents.
40118	'This setup requires 32-bit Microsoft office 2007 SP3, 2010 SP2, 2013 or 2016' error is displayed when installing in an Office 2013 click-to-run environment which has been upgraded from Office 2010.
39743	Unable to transfer content from Excel to Word using drag and drop.
39625	Custom fonts and macros not being saved to normal.dotm when Workshare add-in is enabled.
39624	Slide panes are empty and CPU usage is high after comparing certain PowerPoint documents.
39338	'Object reference not set to an instance of an object' error is displayed when comparing heavily formatted PowerPoint documents.
38528	After converting Office documents with dots in the file name to PDF, parts of the file name are missing.
37429	Digitally signed emails showing as encrypted not digitally signed after cleaning.
37311	Excel spreadsheet hangs when sharing as an attachment through Outlook.
37230	Incorrect changes appear in redline when comparing certain documents.
36726	Unable to clean track changes for all Word documents when using Combine Files feature.
35911	Blank page sometimes displayed after redline statistics in the redline.
35636	Cleaning certain PDF attachments results in the PDF file changing to 2KB file size.
35528	Unable to compare .docm files from NetDocuments.
35474	Activated users are still prompted to sign in to license Professional when using the feature "Save to My Files" in Word.
34883	Redline Summary columns and description run off page when file name + path are too long.
34665	Unable to apply changes to comments.
34061	Unable to save comparison that contains ampersand (&) in file name as a related or attached document to original or modified document in NetDocuments.



ID	Details
32336	Unable to customize the original groups in the Compare ribbon.
26902	The Apply accepted changes button is not enabled when the user accepts only changes under the suggested changes category. Issue observed in Windows 8.1(x64) Office 2013 SP1 SharePoint 2013 SP1.
26804	Dotx/docm/dotm/dot/html type documents are not displayed in NetDocuments Open window. Issue observed in Windows 7 SP1 Office 2010 SP2.
26796	Text is not displayed correctly when specific pdf documents are compared. Issue observed in Windows 7 SP1(x86) Office 2010 SP2 FileSite 8.5 Update 5.
26795	Table is not displayed correctly when comparison is saved as PDF document. Issue observed in Windows 7 SP1(x86) Office 2010 SP2 FileSite 8.5 Update 5.
26671	Error is displayed when click Apply agreed changes after comparing a .docm file as the original document. Issue observed in Windows 7 SP1(x86) Office 2010 SP2 FileSite 8.5 Update 5.
26667	The right-click Combine pdf with Workshare option is not displaying for Office documents after upgrade. Issue observed in Windows 7 SP1 Office 2010 SP2.
26585	License expiry dialog is displayed when logged in as SSO user through share action. Issue observed in Windows 8.1 Enterprise x64-G Office 2013 SP1 DeskSite 9 Update 5.
26584	Account name is not displayed in the WCM > My Products after re-launching WCM. Issue observed in Windows 7 SP1 Office 2010 SP2.
26490	Cleaning Options button does not respond in Workshare Protect dialog while converting to PDF password protected XLS/XLSX. Issue observed in Windows 7 SP1 Office 2010 SP2.
26377	The Save... prompt is not displayed when closing the document after performing clean action through Content risk. Issue observed in Windows 7 SP1 Office 2010 SP2.
26353	Workshare options are not displayed correctly if display font size changed to 125% or 150%. Issue observed in Windows 7 SP1 Office 2010 SP2.
26309	Exception is displayed in the system tray when performing secure file transfer action on document containing '[' or ']' in the name. Issue observed in Windows 7 SP1 Office 2010 SP2.
26274	Incorrect license alert dialog is displayed when launching PPT Compare from the desktop shortcut and closing the login dialog. Issue observed in Windows 7 SP1(x64) Office 2010 SP2 FileSite 9 Update 5 + EMM.

ID	Details
26241	Save to My Files/Share and PDF are disabled for redline if the Allow redline to be saved... option is not selected. Issue observed in NetDocuments-Windows 8.1 Office 2010 SP2.
26237	File format is shown as PDF/A in Email Comparison window even if PDF documents are selected for comparison. Issue observed in NetDocuments-Windows 8.1 Office 2010 SP2.
26198	Incorrect license alert dialog is being displayed when launching Workshare Compare for PowerPoint application. Issue observed in Windows 8.1(x86) Office 2010 SP2(x86) NetDocuments.
26176	Save As Type is empty and disabled in OpenText DM5 Save As dialog, when saving comparison as version. Issue observed in Opentext DM 5.3.1 patch 5 Windows 8.1 Office 2013.
26107	Document is not auto saved to DM server after performing Share action. Issue observed in Windows 7SP1(x64) Office 2013 SP1 (x86) eDocs DM 5.3.1 Patch 5 (COM Only).
26084	Workshare Compare is launched when right-clicking on PPT/PPTX in Worldox and selecting Compare instead of Compare for PowerPoint. Issue observed in Worldox.
26024	The Workshare Connect icon is not shown in the Control Panel after upgrading in MSI mode. Issue observed in SharePoint 2013 SP1 Windows 8(x64) Office 2013.
25974	Unexpected message is displayed when clicking Apply agreed changes if user compares .rtf files and then opens saved WDF. Issues observed in SharePoint SP1 Windows 8(x64) Office 2013.
25915	Links in Excel files are not cleaned when user deselects Exclude field codes with hyperlinks in the WCM. Issue observed in OpenText DM 5.3.1 COM Suite Patch 5 - Windows 8.1(x64) Office 2013 Outlook.
25913	ADM files do not contain license information when generated in the WCM Admin Mode. Assuming that the license entry is generated, but empty then this is as expected. ADM files can't contain entries that are larger than 256 characters so we don't try.
25617	Error saving.. is displayed when sharing files to a group containing special characters in its name. Issue observed in Windows 7 SP1(x64) Office 2010 SP2 FileSite 9 Update 5 + EMM.
25084	File names with character # (hash tag) cannot be saved as attach/relate to original. Issue observed in NetDocuments Windows 7 SP1 Office 2010 SP2.
24926	Workshare warning dialog is not displayed when user clicks See changes link from PowerPoint in Protect standalone build. Issue observed in Windows 7 SP1 Office 2007 SP3.

ID	Details
<b>23947</b>	WCM options of removed features are still displayed in ADM file. Issue observed in AD Server: Windows Server 2008 Enterprise (X86) SP1; Client: Windows 7 SP1(x64) Office 2010 SP2.
<b>22623</b>	Bullets and numbering changes are not applied to comparison document through Apply agreed changes from Compare. Issue observed in Windows 8.1 X64 Office 2013 SP1 SharePoint 2013.
<b>22054</b>	'No valid launch method is found' error is displayed when launching a .WPF file from DM server. Issue observed in OpenText DM 5.3.1 patch 5 Windows 8.1 Office 2013.


## Contact Info

For technical help and support on Workshare products, contact Workshare Customer Support:

[support@workshare.com](mailto:support@workshare.com)  
 EMEA: +44 207 539 1400  
 US: +1 415 590 7705

For sales enquiries, contact the Workshare Sales team:

[sales@workshare.com](mailto:sales@workshare.com)  
 EMEA: +44 207 426 0000  
 US: +1 415 590 7700  
 APAC: +61 2 8220 8090

 Workshare Ltd.  
 © 2017. Workshare Ltd. All rights reserved.

Workshare Professional and Workshare DeltaView are registered trademarks of Workshare Ltd. Workshare Compare, Workshare Protect, Workshare 3, Workshare DeltaServer, SafetyGain, and the Workshare logo are trademarks of Workshare Ltd. All other trademarks are those of their respective holders.

Trademarked names may appear throughout this guide. Instead of listing these here or inserting numerous trademark symbols, Workshare wishes to state categorically that no infringement of intellectual or other copyright is intended and that trademarks are used only for editorial purposes.

The authors/publishers of this guide and any associated help material have used their best efforts to ensure accuracy and effectiveness. Due to the continuing nature of software development, it may be necessary to distribute updated help from time to time. The authors would like to assure users of their continued best efforts in supplying the most effective help material possible.

The authors/publishers, however, make no warranty of any kind, expressed or implied, with regard to Workshare programs or help material associated with them, including this guide. The authors/publishers shall not be liable in the event of incidental or consequential damages in connection with, or arising out of, the programs or associated help instructions.

Workshare Ltd., 20 Fashion Street, London E1 6PX [www.workshare.com](http://www.workshare.com)